

# MONTHLY MEMBERSHIP PROGRESS REPORT

District 3233E2

Results as of: 5/31/2026

GMT:

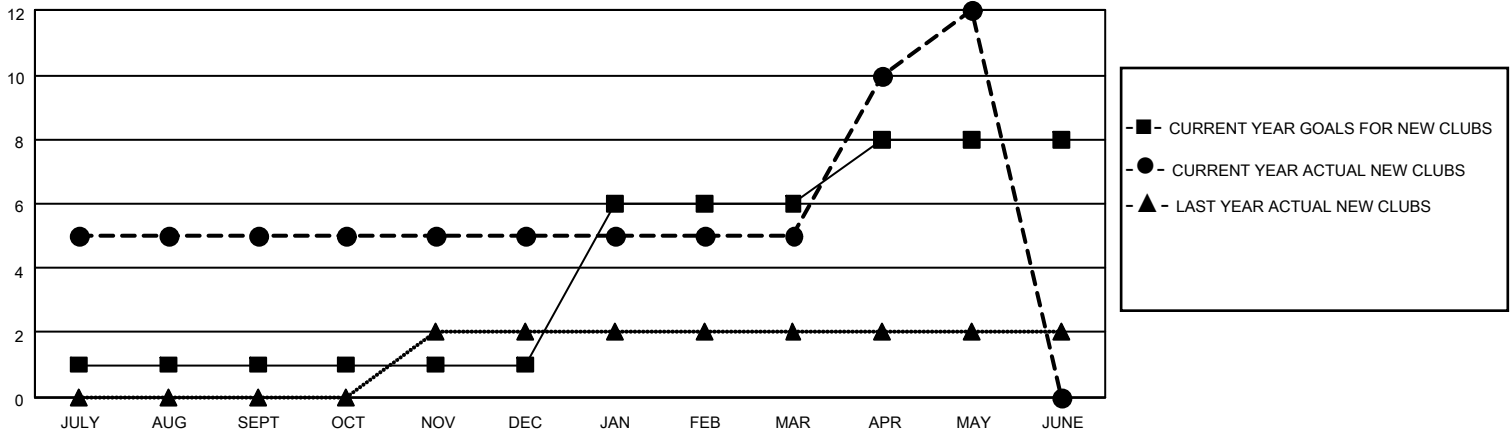
LOCATION INDIA

GMT CA

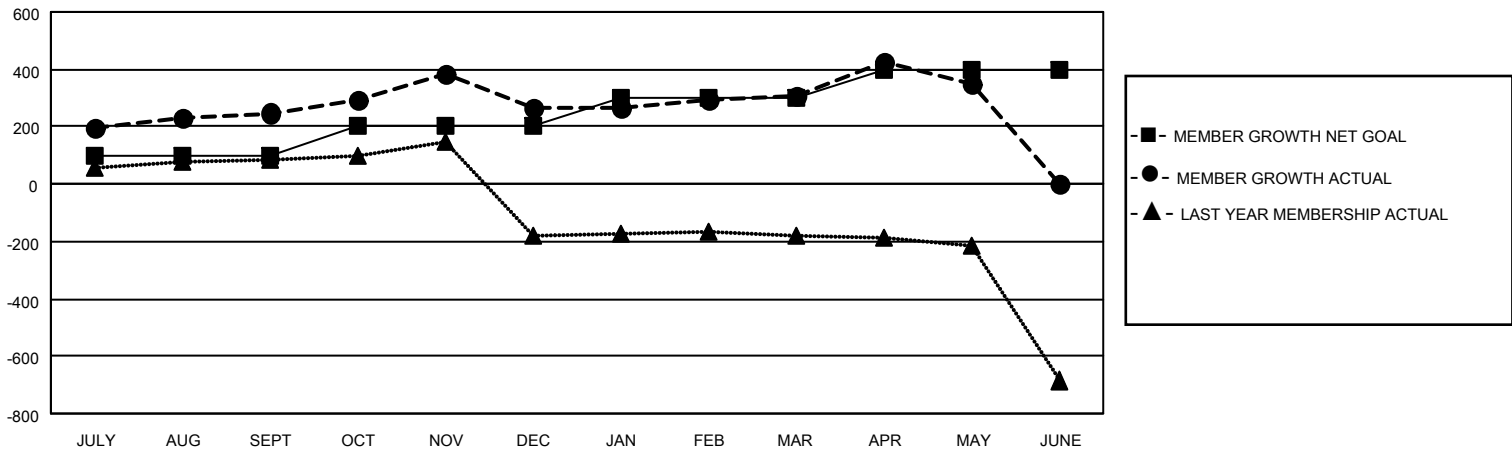
Clubs			
RESULTS FOR 2025-2026			
QUARTER	NEW CLUB GOAL	NEW CLUBS	DROPPED CLUBS
JULY/AUG/SEPT	1	5	0
OCT/NOV/DEC	0	0	5
JAN/FEB/MAR	5	0	1
APR/MAY/JUNE	2	7	0

Members			
RESULTS FOR 2025-2026			
QUARTER	MEMBER GROWTH NET GOAL	MEMBER GROWTH ACTUAL	DROPPED MEMBERS ACTUAL (including transfers)
JULY/AUG/SEPT	100	363	82
OCT/NOV/DEC	100	217	193
JAN/FEB/MAR	100	74	11
APR/MAY/JUNE	100	269	197

GOALS AND ACTUAL NEW CLUBS CUMULATIVE



GOALS AND ACTUAL MEMBERS CUMULATIVE



DROPPED CLUBS: 6	107 CLUBS OF 155 ADDED 1 OR MORE NEW MEMBERS	<b>GENDER DISTRIBUTION</b> MALE 3,924 (76.70%) FEMALE 1,191 (23.28%)
<b>DROPPED MEMBERS</b> DECEASED 13 CLUB CANCELLED 91 OTHER 378 <hr/> TOTAL 482	<a href="#">CLICK HERE FOR CUMULATIVE MEMBERSHIP DATA</a>	TOTAL FAMILY UNIT MEMBERS 1,409 FAMILY MEMBERS PAYING HALF DUES 770